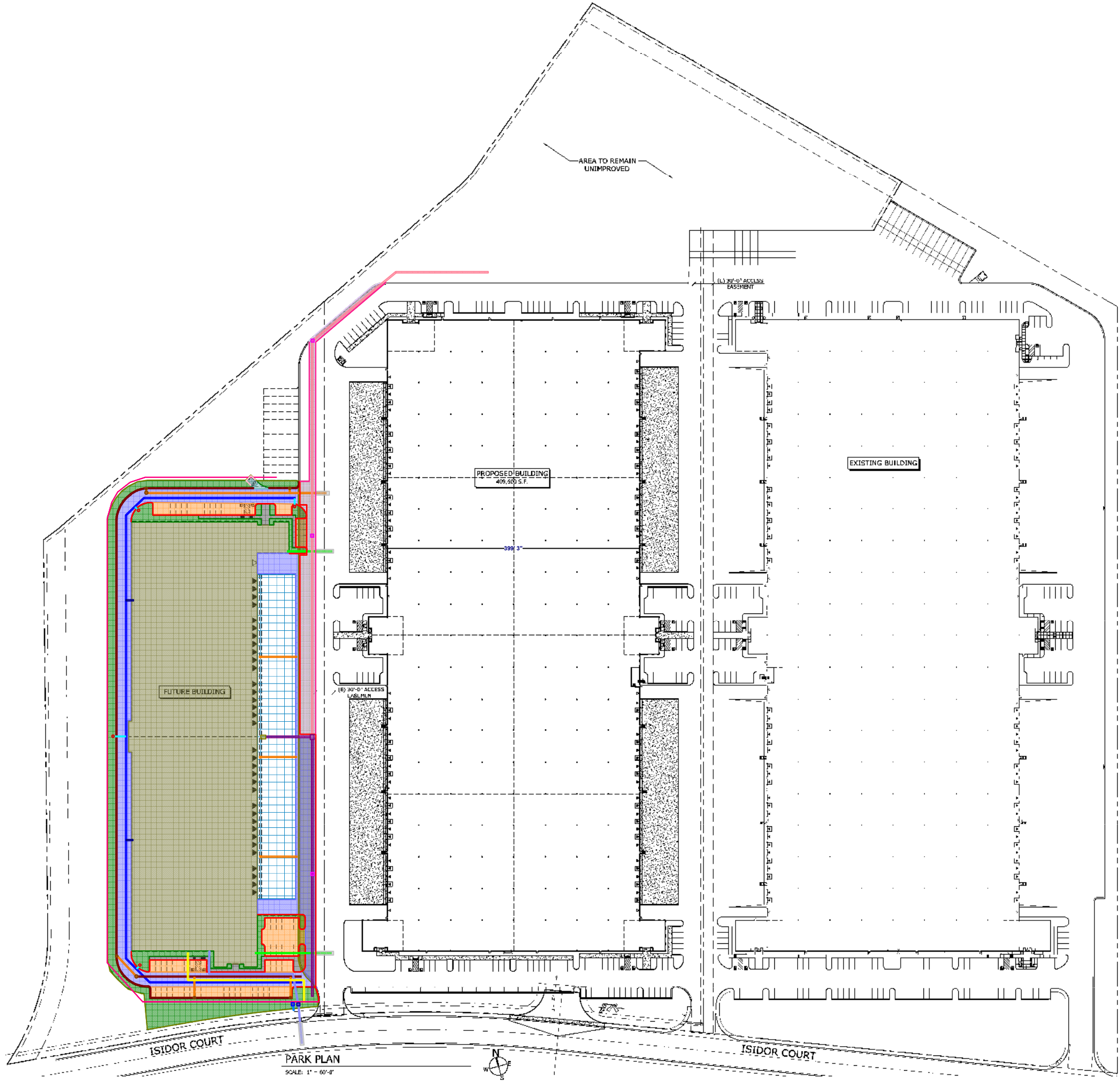


1"=60'-0" SPANISH SPRINGS CORPORATE PARK - BUILDING #2 - 151272_A1.1



All drawings herein are the property of Tectonics Design Group and may not be reproduced or used in any way without the written authorization of Tectonics Design Group.

DRAWN: N.J.L.
DESIGNED: J.G.T.
CHECKED/AMPLIFIED: J.G.T.
DATE: 07/23/15

FOR PERMIT

TECTONICS DESIGN GROUP
 10451 Duval R. Boulevard, Suite, WY 89571
 www.tectonicsdesigngroup.com
 Tel: 775-504-9988
 Fax: 775-502-7988

Spanish Springs Corporate Park - Building #2
 Washoe County, Nevada
 Avenue 55
 Seattle, WA

DATE: 8/26/15
SUBMITTAL: FOR PERMIT

PARK PLAN

A1.0